

MANUAL

HORTICULTURE & CASH CROPS DEVELOPMENT DEPARTMENT MAINTAINED UNDER SECTION 4 (1) (B) OF RIGHT TO INFORMATION (RTI) ACT, 2005.

I. PARTICULARS, FUNCTIONS AND DUTIES OF THE ORGANIZATION

MANDATE

The mandate of Horticulture & Cash Crops Development Department revolves round the distribution of subjects under the second schedule of Government of Sikkim (Allocation and Business) Rules, 2004 which are as under:-

- (1) Horticulture plants, health cover, plant nutrition, education and training research extension and operation of farms for various purposes
- (2) Horticulture including vegetables, flowers, plantation crops, medicinal and aromatic plants etc.
- (3) Promote adoption of seed technology, biotechnology, bio-fertiliser technology, agro-based processing units with respect to horticulture, package and packaging etc. including development of marketing infrastructure.
- (4) To develop, promote and improve upon horticultural crops such as fruits, vegetables, spices, mushroom, potato, other tuber and rhinomatic crops, medicinal herbs (domesticated) etc. including plantation crops
- (5) To organize systematic extension delivery system including trainings, crops exhibition and horticulture transfer of technology etc. besides generation of basic data on various relevant aspects related to production, marketing, extension, cost of production etc.
- (6) Creation of relevant infrastructure for horticulture development
- (7) To promote develop and regulate marketing and market information systems besides creating relevant marketing infrastructures both in rural and urban areas
- (8) To involve NGOs, Cooperatives, private individuals etc. to promote people's participation in horticulture development
- (9) Public Services – Statutory Rules of the Services with which the Department is concerned.

ORGANIZATION

The department is headed by a Secretary with Principal Director in charge of Horticulture to run the overall administration and functions of the department. Principal Director is supported by Directors. Similarly, the Additional Directors, Joint Directors and Deputy Directors man the Head Office as shown in **Chart 1**.

For effective administration and implementation of schemes and to ensure easy access for farm inputs as well as technological know how to the farmers, the administrative setup of the department has been decentralized from the Head Office up to the village level with two Regional Offices headed by on Additional Director level officer who is in charge of the two districts viz. North/East and South/West and the district offices i.e. North, East, South and West headed by one Joint Director level officer, one Deputy Director level officer in each Sub-divisions / Zones and one Horticulture Development Officer in each Block Administrative Centers.

At the Gram Panchayat Unit level, the office is manned by Horticulture Inspectors who are assisted by the Field Assistants.

Besides the setup mentioned above, the horticultural farms are manned by the officers of the department. These farms mainly undertake demonstrations, research and trials, extension activities, multiplication/production of planting materials/seeds etc.

The administrative setup of the Regional Administrative Centers, Districts, Sub-divisions, Zones and BACs is elicited in **Chart 2**.

The functions and responsibilities of the above offices from Head Office to GPU level offices ranges from planning and policy decisions to implement in consonance with subjects entrusted to the department under Allocation of Business Rules. The ultimate objective of the department is to cater to the basic needs of the farming community of the State in developing their capacity in enhancing the productivity both in quality and quantity through training, guidance, transfer of technology and timely supply of needed inputs. The decentralized administrative process also helps farmers in preparing village plans.

ii. POWERS AND DUTIES OF OFFICERS AND EMPLOYEES.

The administrative powers are vested with the Head of the Department while the Regional Additional Directors can exercise as Head of Office to the extent delegated to him by the Government.

Similarly, the Head of Department exercise financial powers s outlined in the appendix 3 and 4 of the Sikkim Government Financial Rules (Rule 55). The Additional Directors in charge of Regional Offices exercise financial powers as Head of Office drawn from Rule 55, appendix 3 and 4 of Sikkim Financial Rule. While planning and policy decisions are taken at Headquarters level, the field level functionaries at district, sub-division and BDO level are equally involved in assisting Zilla Panchayats and village Panchayats in preparing district and village plants based on which the File Year Plan and Annual Plans are prepared by Head Office. The Head and Regional offices exercise mostly regulatory and supervisory functions. The functionaries in the district, sub-division and at block level as well as at the village level are responsible to implement the policies and programmes of the Government.

iii. POCEDURE FOLLOWED IN THE DECISION MAKING PROCESS

In the decision making process, the role of the lower level employees / officers is of significance as they mainly deal with the existing rules, regulations and procedures as the higher ups are more responsible for supervision, guidance and implementation. Therefore, the proposals are initiated from the lower level. Sometimes meetings, workshops involving field level functionaries are also necessary to arrive at the final decision.

CHART - 1

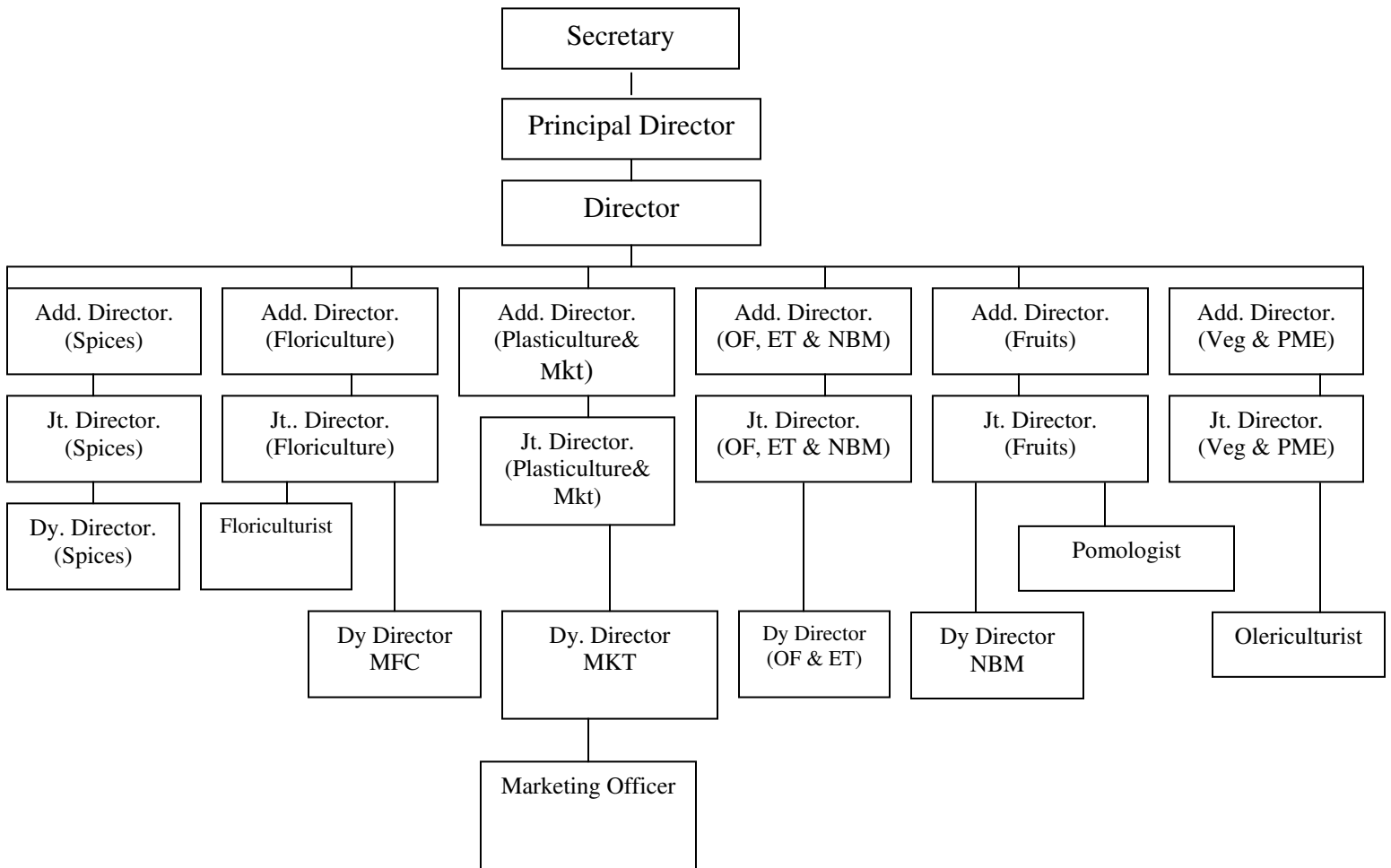
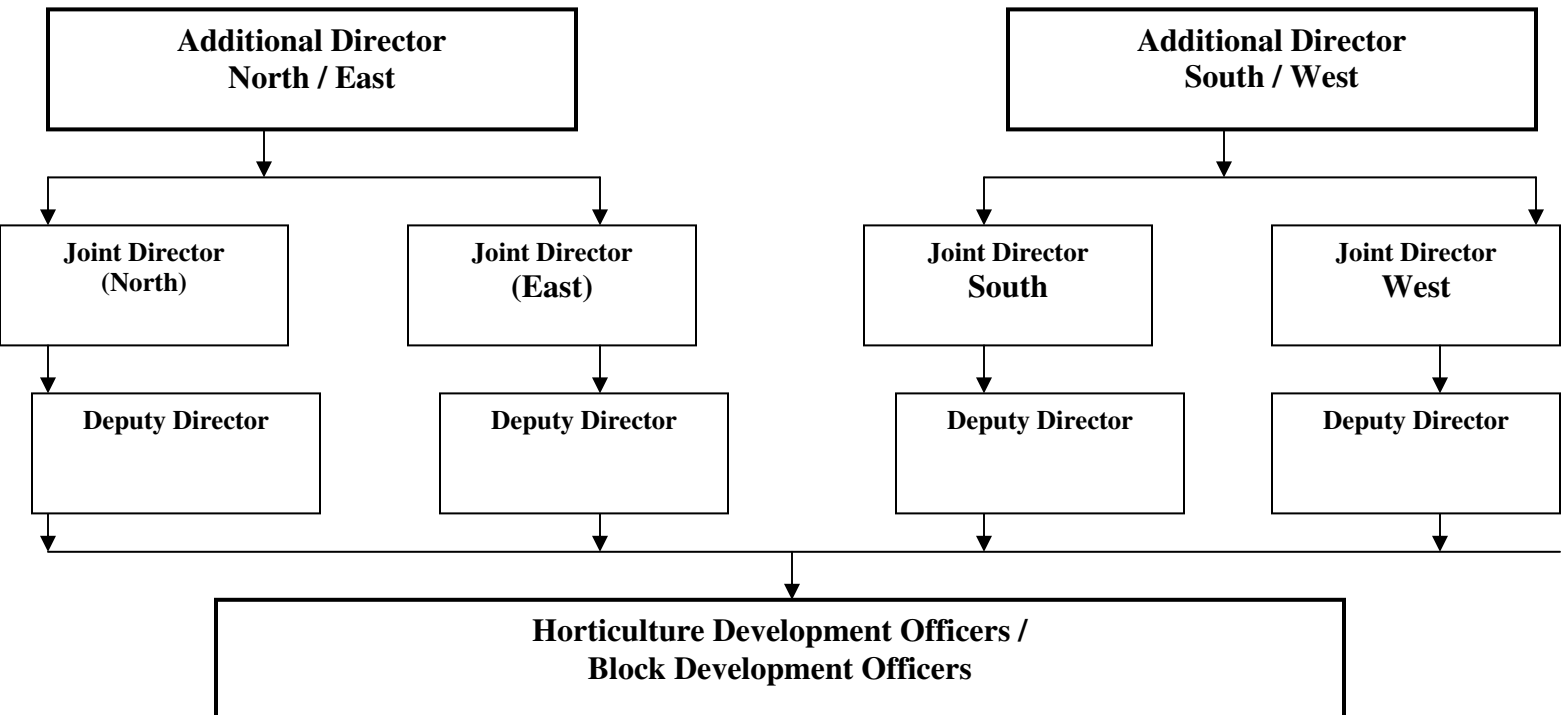


CHART - 2



iv. NORMS SET FOR DISCHARGING FUNCTIONS

In the course of performing the official duties, the functionaries at different levels are guided by the rules and regulations framed by the State Government. While implementing Centrally Sponsored Schemes, guidelines set out by the Government of India are followed.

v. RULES, REGULATIONS, INSTRUCTIONS, MANUALS AND RECORDS FOR DISCHARGING ITS FUNCTIONS

The administrative matters are governed and guided by the Sikkim Service Rules Including:

1. The Sikkim Government Service Rules, 1974
2. The Sikkim Government Establishment Rules, 1974
3. The Sikkim Government Service (Confidential Roll) Rules, 1974
4. The Sikkim Government Servants Conduct Rules, 1996
5. The Sikkim Government Servants (Discipline and Appeal) Rules, 1985
6. The Sikkim Government Service (Leave) Rules, 1982
7. The Sikkim Government Service (Revised Pay) Rules, 1998
8. The Sikkim Government Service (Advancement Grade) Rules, 1999
9. The Sikkim Government Traveling Allowance Rules, 1980
10. The Sikkim Government Service (Medical Facilities) Rules
11. The Sikkim Government State Service (Regulation of Seniority) Rules, 1980 and other recruitment rules, executive orders and instructions while Sikkim Financial Rules, 1979 guides and governs all financial matters.

vi. STATEMENT OF CATEGORIES OF DOCUMENTS

Planning:

1. Five Year Plan Document
2. Annual Plan Document
3. Annual Progress Report

Administrative Matters:

- 1, Sikkim Agriculture Service Rules, 1994
2. Sikkim Sub-ordinate Agriculture Service Rules, 2001
3. Sikkim Service Rules

Financial Matters:

1. Sikkim Financial Rules, 1979
2. Traveling Allowance Rules
3. Medical Rules

vii. ARRANGEMENT FOR FORMULATION AND IMPLEMENTATION OF POLICIES

The policy decisions are taken by the elected representatives of the people. As such, no direct consultation with the members of the public is felt necessary in respect of policy formulation. However, the ideas and requirements of the public expressed through Gram Sabhas are manifested in the village and district plan proposals. In the implementation of policies and programmes due attention is given to the interest of the public.

viii. LIST OF BOARDS, COUNCILS & COMMITTEES

- a. Boards – Agriculture Development and Farmers' Welfare Board

The meeting of the board is confined to members only, however minutes of the meeting are accessible to public also.

IX.

STATEMENT SHOWING THE MONTHLY RENUMERATION RECEIVED BY THE OFFICER AND EMPLOYEES

OF HORTICULTURE & CASH CROP DEVELOPMENT DEPARTMENT.

NON-PLAN

Sl. No	Name	Designation	Scale	Gross salaries per month
1	SHRI R. TELANG	Secretary	12750-16500	33958
2	SHRI K.K. SINGH	DIRECTOR	14300-18300	41580
3	SHRI K.T. BHUTIA	DIRECTOR	14300-18300	40620
4	SMT. CHUMDEN	ADD. SECY	12500-17000	38606
5	SHRI PHURBA TSERING	ADD.DIR	12500-17000	35908
6	SHRI A.K. THAPA	ADD.DIR	12500-17000	37706
7	SHRI NEEMA TSERING	ADD.DIR	12500-17000	35906
8	SHRI D.K. RAI	ADD.DIR	12500-17000	35906
9	SHRI H.C. SINGH	ADD.DIR	12500-17000	35906
10	SHRI S.R GUPTA	JT.DIR	11000-16250	30233
11	SHRI B.B RAI	DY.DIR	9000-13800	27045
12	SHRI. LHENDUP BHUTIA	DY.SECY	9000-13800	26325
13	SHRI P.D. SHERPA	A.O.	7000-11500	21424
14	SMT. D.K.YONZON	ACCTT.	5500-9000	21889
15	SHRI SUBODH KR.POKHRAL	O.S.	5500-9000	15956
16	SHRI T.D.LACHUNGPA	ADD.DIR	12500-17000	36806
17	GYANDEN BHUTIA	U.D.C.	4300-6800	15157
18	GEETA KHATI	ACCOUNTS CLERK	4000-6000	14055
19	SUSHILA THAPA	L.D.C	4000-6000	13815
20	DAWA DOMA LEPCHA	JR.ACCTT	4300-6800	14209
21	BASUDA SYANGDEN	L.D.C	4000-6000	13815
22	MENUKA RAI	L.D.C	4000-6000	12615
23	C.M PRADHAN	L.D.C	3400-5100	11655
24	SHRI RAJU SHARMA	ACCOUNTS CLERK	3400-5100	11415
25	SANGAY GHISSING	ACCOUNTS CLERK	3400-5100	11415
26	LALU TAMANG	DRIVER	3200-4800	10935

27	SMT DORJEE WONGMU	STENO	5500-9000	19496
28	MRS. DAWA LHAMU LAMA	MYCOLOGIST	9000-13800	31845
29	SHRI DORJEE TENZING	ADD.DIR	12500-17000	32306
30	SHRI JAGDISH PRADHAN	DY.DIR	9000-13800	28485
31	SMT CHUMPHILA	U.S	7000-11500	18724
32	SHRI P.C. RAI	JT. DIR	11000-16250	32753
33	SHRI KHORLO BHUTIA	ADD. DIR	12500-17000	37706
34	SHRI PHURBA BHUTIA	ADD. DIR	12500-17000	36386
35	SMT K.N. DOLMA	DY.DIR	9000-13800	29925
36	SMT.ANITA THAPA	DY.DIR	9000-13800	27765
37	SHRI D.N TIWARI	JT.DIR	11000-16250	33593
38	SHRI G.D. GIRI	D.D	9000-13800	29925
39	SHRI LAK TSERING	DRIVER	3200-4800	10695
40	SHRI JEEWAN SUBBA	SR. A.O	9000-13800	25605
41	SHRI LODAY BHUTIA	ACCOUNTS CLERK	4000-6000	11655
42	PASSANG TSERING LEPCHA	FIELD ASSTTS.	2850-4170	7046
43	SHRI LOKNATH SHARMA	PEON	3050-4550	10476
44	SHRI YOGYA SINGH CHETTRI	PEON	3050-4550	9732
45	SMT.KALA PRADHAN	TEL.ATTD.	2850-4170	7046
46	SMT BAL MAYA SUBBA	FIELD ASSTTS.	4000-600	9975
47	SMT KHUS KUMARI CHITTRI	OFF.HELPER	2850-4170	7046
48	SHRI TOPCHEN LEPCHA	ADD.DIR	12500-17000	37800
49	SHRI K.T.BHUTIA	JT.DIRECTOR	11000-16250	30800
50	SHRI C.T. BHUTIA	HORTI. INSPECTOR	5000-8000	16920
51	SHRI K.B PANT	DY.DIRECTOR	9000-13800	30720
52	SHRI SONAM GYATSO	DO	9000-13800	30000
53	SHRI S.T.BHUTIA	DY.DIR (PAK)	9000-13800	29280
54	SHRI S.K SHARMA	DDH RONGLI	9000-13800	24960
55	SMT MINGMA LHAMU	HDO	7000-11500	24720
56	SMT BINA KRI RAI	HDO	7000-11500	24720
57	SHRI J.N.GIRI	HDO	7000-11500	24720
58	SHRI D.K RAI	HI	5000-8000	16560
59	SHRI D.P GURING	H.I	5000=8000	16560
60	SMT C.N LEPCHA	H.I	5000-8000	20820
61	SMT NACHO LEPCHA	A.C	4000-6000	4720
62	SHRI D.K.BASNET	H.I	5000-8000	16920
63	SMT PHUP LHAMU LAMA	H.I	5000-8000	17280
64	SHRI M.B MOKTAN	H.I	5000-8000	17400
65	SHRI SIRIMAN TAMANG	H.I	5000-8000	17280
66	SHRI KHEM LALL KOIRALA	H.I	5000-8000	16920
67	SHRI PARSURAM SHARMA	H.I	5000-8000	17280
68	SHRI BHIM BHD. TAMANG	H.I	5000-8000	17280
69	SHRI RAJENDRA SHARMA	H.I	5000-800	17280
70	SHRI BHANU BHAKTA SHR.	H.I	5000-8000	17280
71	SHRI LEK NATH SHARMA	H.I	5000-8000	17640
72	SHRI GAUTAM TAMANG	H.I	5000-8000	17280
73	SHRI NIRMAL KR. YONZONG	H.I	5000-7000	16920
74	SHRI TILAK PD DAHAL	HI	5000-8000	17280
75	SHRI BIGYAN PRADHAN	H.I	5000-8000	17280
76	SHRI PEMPO BHUTIA	H.I	5000-8000	16920
77	SMT DAUPATI DUNGEL	LDC	3400-5100	9112
78	SHRI SHIVA KR.CHETTRI	H.I	5000-8000	17280
79	SHRI KESSANG LACHUNGPA	H.I	5000-8000	13680
80	SHRI KARMA SHERPA	HI	5000-8000	13680
81	SHRI P.B RAI	H.I	5000-8000	16920

82	SHRI GANESH KR. UPRATI	HI	5000-8000	16920
83	SHRI TSERING CHOPEL BHUTIA	HI	5000-8000	16920
84	SHRI SHANKAR KHANAL	HI	5000-800	17280
85	SHRI C.B GOLAY	HI	5000-8000	16920
86	SHRI BIMAL RASAILY	HI	5000-8000	17280
87	SHRI TSERING CHOPEL LEPCHA	HI	5000-8000	13680
88	SHRI LOWANG DHOJ TAMANG	PEON	3200-4800	10416
89	SHRI H.B THAPA	ADDL.DIR.	12500-17000	36,000
90	SHRI H.C. PRADHAN	JT.DIR	11000-16250	32840

91	SHRI T.T.BHUTIA	DY.DIR	9000-13800	24,960
92	SHRI B.L DAHAL	DY.DIR	9000-13800	25,680
93	SHRI S. CHETTRI	DY.DIR	9000-13800	30,000
94	SHRI K.S GURING	HORTI.DEV.OFFICER	750-12000	24400
95	SHRI D.S GURING	LDC	4000-6000	13800
96	SHRI K.C.BHUTIA	L.D.C	4000-6000	13360
97	SHRI R.K.PRADHAN	DRIVER	3200-4800	13600
98	SHRI KAMAL CHITTRI	DRIVER	3200-4800	13808
99	SHRI TASHI SHERPA	DRIVER	2850-4170	7984
100	SHRI P.C. BHUTIA	H.I	7000-11500	19250
101	SHRI CHUNG TSE.LEPCHA	PEON	2850-4170	8980
102	SHRI S.PRADHAN	H.I	5000-8000	16920
103	SHRI P.B KATWAL	H.I	5000-8000	18720
104	SHRI B.K.RAI	H.I	5000-8000	17280
105	SHRI J.B. SUBBA	H.I	5000-8000	18720
106	SHRI D. RASAILY	H.I	5000-8000	16200
107	SHRI SUREN GURUNG	H.I	5000-8000	13680
108	SHRI C.M SHARMA	H.I	5000-8000	17280
109	SHRI P.C. ROKA	H.I	5000-8000	16920
110	SHRI L.B BASNETT	H.I	5000-8000	16920
111	SHRI D.M TAMANG	HI	5000-8000	17280
112	SHRI K.B. RANA	HI	5000-8000	17280
113	SHRI P.K. THAPA	HI	5000-8000	17280
114	SHRI BINOD KR.RAI	HI	5000-8000	16920
115	SHRI S.B GURUNG	HI	5000-8000	18720
116	SHRI KAMAL GIRI	HORTI.DEV.OFFICER	7000-11500	18720
117	SHRI BIJUI PARIYAR	H.I	5000-8000	14040
118	SHRI ENCHUNG BHUTIA	H.I	5000-8000	14540
119	SHRI PRAYNAI GURUNG	H.I	5000-8000	14040
120	SHRI D.B PRADHAN	HI	5000-8000	17280
121	SHRI C.B. RAI	H.I	5000-8000	17820
122	SMT LAXMI CHIETTRI	H.I	5000-8000	16920
123	SHRI D.B TAMANG	JT.DIR	11000-16250	33840
124	SHRI D.L.CHETTRI	DY.DIR.(R&D)	9000-13800	31680
125	SHRI DAWA TSERING	HORTI.DEV.OFFICER	7500-12000	24500
126	SHRI S.R.BHUTIA	DY DIR	9000-13800	27140
127	SHRI NAVIN KR.PRADHAN	H.I	5000-7500	18260
128	SHRI ZIGMEE DORJEE	H.I	5000-7500	17900
129	SHRI NIRMAL K PRADHAN	H.I	5000-7500	17760
130	SHRI KUNZANG T.LEPCHA	H.I	5000-7500	18260
131	SHRI SANKAR BHUTIA	H.I	5000-7500	17760
132	SHRI LAXMI PRASAD	H.I	5000-7500	17900
133	SHRI ALLEN T.LEPCHA	H.I	5000-7500	17760
134	SHRI RINGZING WANGYAL	H.I	5000-7500	14520
135	SHRI RAM CHANDRA THAPA	H.I	5000-7500	18260

136	SHRI YAM BHD.CHETTRI	A/CLERK	3400-5100	9996
137	SHRI LAK TSE, BHUTIA	DRIVER	3200-4800	8832
138	SHRI DUP TSERING BHUTIA	H.I	5000-8000	24194
139	MISS MINGMA SHERPA	O.HELPER	2850-4170	21389
140	SHRI D.K.RAI	ADDL.DIR	12500-17000	36300

141	SHRI G.P.CHAWAN	JT.DIR	11000-16250	33960
142	SHRI M.K PRADHAN	DY.DIR	9000-13800	30240
143	SHRI B.K.RAI	DY.DIR	9000-13800	30960
144	SHRI TOPCHEN THAKARPA	DY.DIR	9000-13800	27840
145	SHRI TSEWANG PINTSO	DDH(OLIRI)	9000-13800	31680
146	SHRI L.S SINGH	DDH(N)	9000-13800	29520
147	SHRI JANAM S.GURUNG	H.I	5000-8000	17400
148	SHRI B.N.PRADHAN	H.I	5000-8000	17400
149	SHRI RABIN GURUNG	H.I	7000-11500	17880
150	SMT NIRMALA MOKTAN	H.I	7000-11500	17880
151	SHRI P.N PRADHAN	H.I	5000-8000	17760
152	SHRI P.BASNETT	H.I	5000-8000	17400
153	SHRI N.C CHITTRI	H.I	5000-8000	17400
154	SHRI D.S RAI	H.I	5000-8000	17400
155	SHRI D.B BASNETT	H.I	5000-8000	17400
156	SHRI K.B BASNETT	H.I	5000-8000	17400
157	SHRI TEK PD. RAI	H.I	5000-8000	17040
158	SHRI PASSANG TAMANG	H.I	5000-8000	14160
159	SHRI DEKENDRA BHUJEL	H.I	5000-8000	14160
160	SHRI K.B RAI	H.I	5000-8000	17040
161	SHRI TIKA SHARMA	H.I	5000-8000	17400
162	SHRI YOGESH SHARMA	H.I	5000-8000	13440
163	SHRI PASSANG SHERPA	JR.ACCT	4500-7200	15336
164	SMT SABINA PRADHAN	A.CLREK	4000-6000	12980
165	SHRI USHA PRADHAN	L.D.C	3400-5100	8568
166	SHRI SHYAM DAS SHARMA	HDO	7000-11500	18420
167	SHRI PARICT NAMCHU	HI	5000-8000	17400
168	SHRI PREM THAPA	HI	5000-8000	17040
169	SHRI DURGA BHD.PRADHAN	HI	5000-8000	17400
170	SHRI BUDHA BIR MANGAR	FA	3050-4550	10320
171	SHRI BALARAM SHARMA	MALI	3200-4800	10688
172	SHRI DHAN BIR GURUNG	FA	4000-6000	13600
173	SHRI C.B SHANKAR	FA	3050-4550	10140
174	SHRI L.P NEOPANAY	FA	DO	10140
175	SHRI BALARAJ THAPA	FA	DO	10140
176	SHRI SHIVA LALL SHARMA	WATCHMAN	3200-4800	10304
177	SHRI DEVI CHARAN SHARMA	FA	4000-6000	13120
178	SRHI ISHWAR KR. RAI	FA	4000-6000	12880
179	SHRI PADAM PD SHARMA	F.M	4000-6000	13120
180	SMT KARMA DOMA BHUTIA	FA	2850-4170	8848
181	SHRI DAWA TSE.TAMANG	FA	DO	8248
182	SHRI SATEY BHUTIA	FA	3050-4550	10320
183	SHRI MOHAN PD SHARMA	WM	3200-4800	10880
184	SHRI ROHIT PD SHARMA	MALI	3050-4550	9600
185	SHRI CHURAMANI SHARMA	W.M	3200-4800	10304
186	SHRI NANDA PD.SHARMA	FA	4000-6000	13360
187	SHRI CHEWANG TAMANG	FA	4000-6000	13600
188	SHRI R.K. SHARMA	FA	3050-4550	9600
189	SHRI SAMBU PD. SHARMA	FA	4000-6000	13360

190	SHRI PREM BHD TAMANG	FA	4000-6000	12880
191	SHIR SONAM DORJEE BHUTIA	FA	4000-6000	13120
192	SHRI SHERAP BHUTIA	FA	4000-6000	13120
193	SHRI PHUCHUNG BHUTIA	MALI	3200-4800	10688
194	SHRI PADAM BHD.RAI	MALI	DO	10496
195	SHRI NIMA TSE.BHUTIA	MALI	2850-4170	8308
196	SHRI KARMA TSE.BHUTIA	FA	4000-6000	13600
197	SHRI TASHI TSE. BHUTIA	F.M	4000-6000	13120
198	SHRI KAMAL PD BHATARAI	MALI	2850-4170	8248
199	SMT TSERING CHODEN	MALI	2850-4170	8116
200	SHRI U.NARAYAN SHARMA	FA	4000-6000	13600
201	SHRI SAMDUP TSE.LELPCHA	FA	3400-5100	11140
202	SHRI K.B BHUJEL	FA	3050-4550	8700
203	SHRI K.K.LIMBOO	MALI	3200-4800	10688
204	SHRI TEK BHD RAI	MALI	DO	10880
205	SHRI PHIP RAJ SUBBA	FA	DO	10304
206	SHRI KEDAR NATH NIROLA	MALI	3050-4550	10160
207	SHRI THENDUP BHUTIA	FA	4000-6000	12880
208	SHR MANI KR. RAI	MALI	3050-4550	9960
209	SHRI ONG TAMDING LEPCHA	MALI	DO	9420
210	SHRI BIJOY KR. RAI	MALI	DO	8420
211	SHRI SONAM LEPCHA	MALI	2850-4170	8168
212	SHRI JANGA BHD.DARJE	MALI	3050-4550	9060
213	SHRI TEK BHD.KALIKOTEY	MALI	2850-4170	8380
214	SHRI LALIT KR.CHITTRI	MALI	DO	7456
215	SHANKAR NARAYAN PRDH.	FA	DO	7324
216	DHAN RAJ MANGAR	FA	2850-4170	7324
217	PRAKASH SUNWAR	F.A	2850-4170	7324
218	TEK BHD CHETTRI	FA	2850-4170	7324
219	DEO NARAYAN CHETTRI	FA	2850-4170	7324
220	TIKA RAM MAJHI	FA	2850-4170	7324
221	DHAN BHD.PRADHAN	FA	2850-4170	7324
222	NAYAN TARA RAI	FA	2850-4170	7720
223	LAKHAY BHUTIA	HEALPER	DO	7192
224	DAMBER SINGH GURUNG	FA	DO	8512
225	PASSANG TSE. TAMANG	F,A	4000-6000	12880
226	SHRI CHEMRAJ RAI	F.A	2850-4170	9832
227	SHRI TIL BHD.CHETTRI	FA	3200-4550	10140
228	PHIP RAJ SUBBA	FA	3200-4550	10140
229	SHRI DIK BIR RAI	FA	2850-4170	8776
230	SHRI LAL BHD.RUCHAL	F.A	3200-4550	10320
231	SURAJ RAI	FA	4000-6000	12880
232	SAHAJIT RAI	FA	4000-6000	12880
233	SHRI TRILOCHAN SHARMA	F.M	3200-4550	8160
234	SHRI DURGA PD. GURUNG	F.M	4000-6000	12640
235	SHRI PURNA BHD.CHETTRI	F.M	4000-6000	12880
236	SHRI TOKALMAN CHETTRI	F.M	3200-4550	10140
237	SHRI KATAK MAN RAI	F.M	4000-6000	13120
238	SMT HIMA KRI. RAI	F.M	2850-4170	8476
239	SHRI KHAS BDH. RAI	F.M	3200-4550	9960
240	SUREN KR. TGAMANG	F.A	2850-4170	8116
241	RAM KR. RAI	FA	3200-4550	12840
242	PEM NURI SHERPA	FA	3200-4550	10820
243	NORBU TSE. SHEHRPA	FA	4000-6000	14100

244	PHURBA SANGAY SHEHRPA	FA	3200-4550	10435
245	PHURBA DORJEE SHERPA	FA	2850-4170	8052
246	NIM TEMBA SHERPA	FA	2850-4170	7192
247	LAXMI PD. KHATI	FA	4000-6000	12880
248	SHRI B.K DARJEE	MALI	3200-4800	10944
249	SHRI K.B CHETTRI	MALI	3200-4800	10944
250	SHRI BIR BHD. RAI	MALI	3050-4550	9840
251	SHRI K.B BASNETT	F.M	3050-4550	10520
252	SHRI MUNSHI BHUTIA	F.M	4300-8800	13440
253	SMT. PEM CHOPDEN BHUTIA	MALI	2850-4170	8556
254	SHRI THUTOP LEPCHA	F.A	4000-6000	12960
255	SHRI THARCHU LACHUNGPA	MALI	3050-4550	11432
256	SMT CHONGCHOK DOMA	MALI	2850-3950	8660
257	SHRI TENZING GYAMTSON	F.A	4000-6000	13460
258	SMT DEKYONG ZANGMOO	MALI	2850-3950	8132
259	SHRI CHEWANG GYAMTSON	FA	3200-4800	11384
260	SHRI KARMA LEPCHA	F.A	2850-4070	8296
261	SHRI CHUNG CHUNG BHUTIA	F.A	4000-6000	13680
262	SHRI LAXMI PD.SRIPAL	F.A	4000-6000	13200
263	SHRI MAHENDRA KR.CHETTRI	F.A	3200-4800	10752
264	SHRI CHEWANG NORBU	F.A	4000-6000	13680
265	SHRI SUBASH CH.TAMANG	F.A	4000-600	13440
266	SHRI KHUSENDR LOHAR	F.A	2850-4070	8556
267	SHRI KRISHNA PD.RAI	F.A	4000-6000	13440
268	SHRI BHIRKA BD.PRADHAN	F.A	4000-6000	13680
269	SHRI NAR BHD.MANGER	F.A	4000-6000	13440
270	SHRI DILIP KR. GURUNG	F.A	2850-4170	10500
271	SHRI LAXMI PD.SHARMA	F.A	3200-4800	13344
272	SHRI TIKA RAM DUNGYAL	F.A	2850-4070	8556
273	SHRI RATAN KR.PRADHAN	F.A	4000-6000	13200
274	SHRI AMBER BHD.LOHAR	F.A	4000-6000	13440
275	SHRI DEO PRAKAHS RAI	F.A	4000-6000	13680
276	SHRI ABICHANDRA SAPKOTA	F.A	3050-4550	9480
277	SHRI PASSANG BHUTIA	FA	4000-6000	13440
278	SHRI C.P. CHAWAN	FA	3050-4550	10728
279	SHRI D.K BHANDARI	FLORICULTURIST	11000-16250	35360
280	SHRI UTTAM GURUNG	DRIVER	4000-6000	13120
281	SHRI M.B KARKI	H.I	5000-8000	17640
282	SHRI ANG BABU SHERPA	H.I	5000-8000	12240
283	SHRI D.B.KAMI	F.A	3050-4550	12840
284	SHRI PADAM SUBBA HFRO	DDH	9000-13800	28560
285	SHRI K.N KPRADHAN	M.O	9000-13800	26400
286	SMT DIKI DOMA	H.I	5000-8000	17640
287	SMT CHUMSANG BHUTIA	LDC	4000-6000	12880
288	MISS PEMA EDEN	H.I	5000-8000	13680
289	SHRI JIGMEE DORJEE	F.A	2850-4170	7324
290	SHRI BIDESH MANGER	F.A	2850-4170	3015

57531696

4794308

PLAN

291	SHRI NAMGYAL TSE.	ST. KEEPER	3400-5100	11356
292	SHRI WANGCHOK TSE.	DRIVER	3050-4550	12300
293	SHRI NETRA KR. CHETTRI	DRIVER	3050-4550	9420
294	SHRI BINOK KR.SHARMA	W.M	2850-4170	9012
295	SHRI CHANG DORJEE	W.M	3200-4800	10804

296	SMT. DOMA SUBBA	WM	2850-4170	7456
297	SMT.BHIM MAYA RAI	MALI	2850-4170	7456
298	SHRI SHAHABIR CHETTRI	MALI	3200-4800	11636
299	SMT PASSANGKIT LEPCHA	F.A	2850-4070	7632
300	SHRI H.B DARJEE	F.A	2850-4070	7548
301	SMT. DHAN LAXMI	F.A	2850-4070	7284
302	SMT. SABITRI PRADHAN	F.A	2850-4070	7284
303	SMT MEERA KR.BASNETT	W.M	2850-4170	9348
304	SHRI TEK BHD.CHETTRI	MALI	2850-4170	9012
305	SHRI SAN BHD.TAMANG	MALI	3200-4550	9780
306	SHRI LAKPA TAMANG	MALI	2850-4170	7192
307	SHIR NAR BHD.SUBBA	F.A.	3050-4550	11060
308	SHRI JAGAT SINGH RAI	F.A.	3050-4550	11060
309	SMT USHA PRADHAN	LDC	2850-4170	8380
310	SHRI PASSANG BHUTIA	FA	4000-6000	12218
311	SHRI H.B DARJEE	FA	2850-4170	6698
312	SHRI DHAN LAAXMI CHITT.	FA	2850-4170	6698
313	SHRI CHUNGPEN LEPCHA	MALI	2850-4170	9040
314	SHRI PREM KR.TAMANG	DRIVER	4500-7200	14580
315	SHRI SHANKAR TAMANG	MALI	2850-4170	8512
316	SHRI PEMBA BHUTIA	DRIVER	4000-6000	10960
317	SMT. Esher RAI	L.D.C	3400-5100	9040
318	SRHI NERENDRE GAUTAM	DRIVER	4000-6000	11440
319	SHIR OMNATH KHATIWADA	F.M	4000-6000	13840
320	SHRI JOGENDRA GAUTAM	F.M	2850-4170	10492
321	SHRI KAZI DARJEE	DRIVER	3200-4800	8960
322	DR. M.M. DAWN	ADV. FLORI.	on contract	41400
323	SHRI MANI KR.TAMANG	DRIVER	4500-7200	14580
324	SHRI PASSANG TAMANG	MALI	2850-4170	8512
325	SHRI BHARAT GURUNG	DRIVER	4000-6000	10960
326	SMT RACHANA GURUNG	H.I	5000-8000	14064
327	SHRI NIMA TAMANG	DRIVER	3200-4800	8960
328	SHRI ASHOK GURUNG	MALI	2850-4170	8908
329	SMT. SARITA CHETTRI	LDC	4000-6000	12880
330	SHRI PURNA BHD THAPA	F.A	4000-6000	13360
331	SMT. DIKKI YANCHEN	F.A	4000-6000	13360
332	SHRI ISHWAR GURUNG	DRIVER	4000-6000	11200
333	SHRI PURNA BHD TAMANG	FA	2850-4170	7324

TOTAL

631.85 LAKHS

x. BUDGET ALLOCATION:

The budget allocations to each of the agency / programme of the department are reflected in the Demands for Grants for the year as passed by the State Legislature. The disbursement / actual expenditure incurred under each programme are compiled by the Accountant General Office and appropriation account as per the disbursement / expenditure for the year is prepared by them.

A brief summary of budget allocation for the year 2007-08 is as follows:

I. STATE PLAN	(Rs. In thousand)
A. 2401 Crop Husbandry	80,032.00
B. 2415 Agriculture Research & Education	740.00
C. 2435 Other Agriculture Programme	3,700.00
Total:	84,472.00
II. CSS PROGRAMME	3,478.00
TOTAL PLAN BUDGET:	87,950.00
III. NON-PLAN	
A. 2401 Crop Husbandry	57,377.00
GRAND TOTAL (PLAN+NON-PLAN+CSS)	1,45,327.00

xi. SUBSIDY PROGRAMMES:

The subsidy / concessions are inbuilt in the programme / schemes itself. Mostly Central Sponsored Schemes do have such components.

Subsidy under Technology Mission for Integrated Development of Horticulture (CSS) are given as per the guidelines of the scheme and are as follows:

Sl. No.	Name of Crop	Unit	Percentage of Assistance
1	a. Fruits (perennials) B. Rejuvenation of senile plantations	Ha. Ha.	75% 50%
2	Vegetables	Ha.	50%
3	Roots & Tuber Crops	Ha.	50%
4	Spices	Ha.	50%
5	Floriculture	1 unit of 0.20 Ha	50%
6	a. Hi-tech Greenhouse b. Low cost greenhouse c. Low tunnel d. Shade nets houses e. Anti Hail Nets	Upto 1000 sqm Upto 100 sqm 500 sqm 50 trees	Rs. 325.00/sqm Rs. 125.00/sqm 50% 50% Rs. 500.00/tree
7	Integrated Multi crop Nursery a. Public Sector b. Private Sector		Rs. 18.00 lakhs Rs. 8.00 lakhs
8	Small Nursery a. Public Sector		Rs. 3.00 lakhs
9	Tissue Culture Unit a. Public Sector b. Private Sector		Rs. 21.00 lakhs Rs. 10.00 lakhs
10	True Potato Seed Centre a. Public Sector b. Private Sector		Rs. 12.50 lakhs Rs. 2.00 lakhs
11	Progeny & Herbal Garden a. Public Sector b. Private Sector		Rs. 3.00 lakhs Rs. 1.50 lakhs
12	Training of Farmers a. Within the State (7 days) b. Outside the State c. Training of Trainers		Rs. 1500.00/farmer Rs. 2500.00/farmer Rs. 50,000.00/participant
13	Supervisory Training Centre		Rs. 20.00 lakhs
14	Gardeners' Training Centre		Rs. 2.00 lakhs
15	Incentive for Organic Farming		Rs. 10,000.00/Ha
16	Vermicomposting		Rs. 30,000.00/Unit
17	Creation of Water Sources		Rs. 1.00 lakh/Ha
18	Drip Irrigation		Rs. 28,500.00/Ha
19	Sprinkler Irrigation a. For Small, Marginal, SC&ST and women farmers b. Others		Rs. 15,000.00/Ha Rs. 10,000.00/Ha

xii. CONCESSION, PERMITS, GRANTS:

No concessions, permits etc. other than subsidies on schemes are granted to the public. In case of damage of crops due to natural calamities, compensation in kind including seeds and other inputs are given to the affected farmers. In case of extensive damage, Land Revenue and Disaster Management Department also grants compensation in cash through District/Sub-division/BDOs.

xiii. INFORMATION HELD OR AVAILABALE IN ELECTRONIC FORM:

In view of the small size of the State and the offices of the department available at the doorstep of the farmers, departmental related information are so far disseminated to the village level through letters, phones and wireless media. Hence, electronic media is not utilized in transferring the information so far. However, it will be taken care of in the future.

xiv. FACILITIES AVAILABLE FOR OBTAINING INFORAMTION:

The members of public can access to information from the various offices at various levels of the department during office hours (10.00 am to 4.00 pm) on working days. The officers of the department can also be contacted even during holidays. Besides these, information on horticulture is also circulated in the form of pamphlets, prints, media forms from time to time. Training programmes, seminars, workshops, exhibitions etc. are also organized often to educate the public and to keep them informed of the latest technologies and updates. The local private cable television and Gangtok station of All India Radio are the other agencies for disseminating information.

xv. NAMES, DESIGNATION OF PUBLIC INFORMATION OFFICERS:

Sl. No.	Name	Designation	Place of posting
1.	Mr. NT Bhutia	Additional Director (PIO)	Gangtok
2.	Mr. PC Rai	Joint Director (APIO)	Gangtok
3.	Mr. DB Tamang	Joint Director (APIO)	Mangan
4.	Mr. GP Chauhan	Joint Director (APIO)	Namchi